



IMPACT REPORT

Thank you for bringing joy to children with cancer
and their siblings in Greater Atlanta

WHAT WE DO

Your support helps us provide free of charge programming throughout the Greater Atlanta community.

Because of you, we can:

- Offer a transformational experience during our six-week summer at camp
- Provide reunion days with campers throughout the year
- Serve children undergoing treatment at Children's Healthcare of Atlanta
- Distribute themed activity bags to children at bedside
- Support families by 'showing up' with videos and engagements after their child is diagnosed or during a tough time



\$6,000 brings a life-changing summer and year-round programs to a child with cancer in Greater Atlanta. Your gift makes a BIG difference.

Will you help with a gift?



Friends,

Thanks to compassionate people like you, Aurora has served children and families struggling through a childhood cancer diagnosis since 2017. Childhood cancer is a family crisis and coming on the heels of the pandemic, our children need us now more than ever.

Every year since our launch, we have served more children through our summer, year-round and in-hospital programs. **Last year alone, we touched the lives of nearly 1,500 children.**

Through it all, we have had the reassurance that our struggling families in Greater Atlanta can count on Aurora thanks to YOU! Thank you for recognizing the tremendous need in our community and giving generously to help us deliver our life-changing services.

Sincerely,

Greg Hill
Executive Director

Stacy Sutton
Board Chair

OUR 2021-2022 IMPACT



173 CHILDREN ENROLLED CAMPERS

For the fifth summer in a row, Aurora's flagship program served more children.



42% OF FAMILIES WERE NEW TO AURORA

In our fifth summer, 42% of families took advantage of our life changing program for the very first time.



17+ COUNTIES IN GREATER ATLANTA SERVED

Our community continues to expand to serve more counties in Atlanta. With 5 busses crisscrossing the city, we are transporting kids from the likes of Douglasville, McDonough, and Snellville among many others.



4.9 OUT OF 5.0 STARS FROM PARENTS

Parents give us high marks. Everything we do, we do for our kids.



100% OF FAMILIES FEEL PART OF THE AURORA COMMUNITY

Aurora is more than a camp, it's a community of families that find strength in one-another.



90% OF PARENTS FELT THEIR CHILD HAD INCREASED CONFIDENCE

We encourage all our campers to participate in new activities that broaden their worlds.



300+ CHILDREN PARTICIPATED IN REUNION PROGRAMS

Maintaining friendships and bringing together families is an important part of what we do. Our reunion programs allow for 'camp' to continue all year long.



1,100+ CHILDREN SERVED AT CHILDREN'S HEALTHCARE OF ATLANTA

Aurora on Wheels operates 5x per week, and over 200x a year. This program wheels a tie-dye trunk full of games and crafts to serve children undergoing treatment. When we aren't in session, our Aurora Anytime Bags are distributed to provide hours of camp-like fun.



CORPORATE VOLUNTEERS PRODUCED 500+ AURORA ANYTIME BAGS

Companies throughout Atlanta have sponsored and created Aurora Anytime Bags to distribute.



10+ NEW BOARD MEMBERS & 20+ COMMITTEE MEMBERS

People like you are joining in our mission to serve more kids in Greater Atlanta.

Your kindness and generosity make a BIG impact.

THANK YOU!

BOARD OF DIRECTORS

CHAIR

Stacy Sutton

Director of Growth, Georgia Oak Partners

MEMBERS

Tess Berrafato

Science Teacher, Fulton County Board of Education

Kasey Brooks

AVP, Member Care, Delta Community Credit Union

Malena Casey

VP, CRM Strategy & Business Operations, Delta Community Credit Union

Melissa Cherry Davis

Director, Cox Communications

Jordan Forman

Counsel, Fox Rothschild LLP

Tracey Guinyard

Head of Diversity Talent Acquisition, Workday

Pat Jordan

President, Pat Jordan & Associates

Ashley Linton

Marketing Manager, OutSystems

Genille McElvey

Technology Manager, State Farm Insurance

Eve Nimkar

VP Client Marketing, Truist

Carl Obradovich

Partner, Deloitte Tax LLP

Dr. Su Rayburn

VP, Information Management & Analytics, Delta Community Credit Union

James Taylor

Managing Partner, Atlanta Pro AV

Brittiney Washington

Manager, Global Diversity, Equity & Inclusion IHG Hotels & Resorts

Rachel Weinthal

Director, Delta Consulting Group



Aurora Day Camp is a proud member of the **Sunrise Association**, whose mission is to bring back the joys of childhood to children with cancer and their siblings worldwide. Sunrise accomplishes this through the creation and oversight of welcoming, inclusive **summer day camps, year-round programs and in-hospital recreational activities**, all offered **free of charge**.



Sunrise Association 2022 Impact Report





OUR MISSION

The mission of the Sunrise Association is to bring back the joys of childhood to children with cancer and their siblings worldwide. This mission is accomplished through the creation and oversight of welcoming, inclusive **Summer Day Camps**, **Year-Round Programs** and **In-Hospital Recreational Activities**, all offered **free of charge**.

OUR VISION

We work towards a world where cancer will not be the defining factor in a child's life; where children and families navigating the difficult world of pediatric cancer can find hope, love and an extra ray of sunshine; where cultural diversity is embraced and every child is celebrated for who they are and for the unique gifts they bring into the world.

OUR VALUES

FUN IS MANDATORY

Sunrise is children just being children – having fun playing and laughing together. We want every child, even if they can only attend for one day, to have the best day ever!

INCLUSIVITY AND DIVERSITY

Sunrise is a worldwide organization made up of people from every walk of life who recognize and embrace the particular journey that our children are on. Sunrise actively seeks to create inclusive communities – whether at camp or in the hospitals – that celebrate diversity and equity among all our children and staff while respecting both the distinctions and the commonalities that bind us together as a human family.

HOPE & HEALING

While we cannot cure cancer, Sunrise can provide the healing of the heart as well as the hope that each child can experience the true meaning of childhood.

FROM OUR LEADERSHIP

Dear Friends,

Sitting down to write this letter, the word growth is top of mind. Over these past few years, despite unprecedented challenges, we have seen a **season of Sunrise growth** unlike others. Our in-hospital programs and services are now in **more than 100 hospitals** across the country, when just four years ago, that number was 26. This past summer we opened **two new camps**, and we can't wait for the opening of our **12th camp this summer**, in the Windy City of Chicago. Our staff continues to grow proportionally - as do our partner organizations - assuring that we will continue meeting the needs of the increasing number of families in our orbit while assuring that the quality of our existing programs is protected and nurtured.

Looking beyond the numbers, we begin to understand the meaning of this growth. Take the **first annual SunriseWALKS Chicago**, which took place in October. **More than 200 supporters** of all ages gathered nine months before a camper will even set foot in the new camp. The community bundled up outside on a chilly morning and raised nearly \$55,000 to welcome Sunrise to their campgrounds. It was a **tremendous show of faith** by a brand new Sunrise community. We've seen this before and we will see it again. Families who have just received a cancer diagnosis for a child have no idea that this inspiring group of people has come together to make each other's lives better. Their lives are about to interact in the most beautiful ways. Because of us. Because of you.

The numbers inspire us to go further, farther and closer to meeting our goal of reaching **one-third of all eligible U.S. pediatric cancer patients and their siblings by 2026**.

A LOOK BACK AT 2022...




10

IN-PERSON
DAY CAMPS

1,844

CAMPERS
ENROLLED



It is attainable. We remember that when we started out in 2006, we had one summer day camp with 96 children enrolled. By this July, we anticipate having 12 locations worldwide - including our virtual camp, SunriseVX. In addition, we are rapidly increasing our year-round services within hospitals worldwide, including our in-person Sunrise on Wheels programs along with our numerous virtual offerings. All in all, we anticipate engaging more than 40,000 children within a year's time.

We can do this. We will do this. And the stories you are about to read go beyond the numbers to shine a light on why we do what we do. They highlight the joy and smiles that we bring to children and their families. They celebrate our supporters and partners of all ages who are making these dreams a reality. They celebrate you.

We deeply thank you.

Joy Zelin
Board Chair



Annie Preminger
President & CEO



46

WEEKLY IN-HOSPITAL
SUNRISE ON WHEELS
PROGRAMS

2,562

CHILDREN SERVED
IN HOSPITALS

87

HOSPITALS PARTICIPATING
IN SUNRISE VIRTUAL
PROGRAMS

29,018

KIDS ENGAGED THROUGH
VIRTUAL PROGRAMMING

1,000,000+

SUNRISE SMILES





FROM CAMPERS TO COUNSELORS: PAYING IT FORWARD

Doing regular childhood things – like going to school – was incredibly difficult for Hina Zahid when she was very young. Hina had battled a brain tumor twice – first at the age of 2 and then again after relapsing when she was 9. That's when Hina found Sunrise Day Camp–Long Island and the experience was life-changing.

“Sunrise offered me an immediate safe space,” Hina explained. “It wasn’t about treatment or cancer – it was about having fun.” When Hina aged out of the camper program, she came back the following summer as a counselor and has served in that important role ever since. “I wanted nothing more than to give back to the

greatest place on Earth and help other kids experience the same magic as I did.”

Like Hina, many former campers are helping us continue to make that Sunrise magic. This past summer, there were almost 50 Sunrise and Horizon Day Camp counselors who had once been campers. It's not surprising that the older camps have seen more campers transition to the counselor role, and as Sunrise continues to grow, we can expect to see many more at all locations.

Deanna Slade, Vice President of Camping and Related Services and the Director of Sunrise Day Camp–Long Island, observes

that many of our campers-turned-counselors share similar feelings about why they come back. “These kids have had such an incredible and impactful experience at Sunrise that they want to pay it forward to other kids,” said Deanna. “The campers-turned-staff have seen their counselors as their role models and want to give back to our current campers. It’s really special.”

These campers-turned-counselors have first-hand connections to cancer, and often express to Deanna that it’s “interesting to be on the other side” of the camping experience. “These counselors spend a lot of time reflecting back to when they were campers,” said Deanna, and often exhibit qualities that make them successful in the counselor role. These qualities include being compassionate, hard-working, thoughtful, creative, dedicated and good team players.

Returning as counselors also allows former campers to remain active in the Sunrise

community. Alis Almonte started Sunrise Day Camp–Pearl River as a camper in 2018 and became a counselor in 2021. “Sunrise Day Camp has become my safe space,” said Alis. “There is no place I feel more comfortable in my skin than in the campgrounds at Sunrise Day Camp–Pearl River.”

Nathaniel Blades, 19, has been at Sunrise Day Camp–Long Island for the past 14 summers. His twin brother, Elijah, was diagnosed with acute lymphoblastic leukemia (ALL) right before their fifth birthday. Nathaniel shared that he returns as a counselor to give back to others and to stay connected. “When my brother and I were campers, Sunrise gave us an opportunity to have a summer and not worry about cancer or treatments. I wanted to give back and give an opportunity for other campers to enjoy their summer,” he said. “There’s no question that I’ll continue working for/with Sunrise. Sunrise is like home, and I never want to leave my family.”

The Sunrise Association is proud to have employed a record number of counselors this past summer who began their journey with us as campers!

Sunrise Day Camp–Long Island: 29

Sunrise Day Camp–Pearl River: 13

Sunrise Day Camp–Staten Island: 5

Horizon Day Camp–Baltimore: 1



EXCEEDING EXPECTATIONS

WELCOME TO HORIZON DAY CAMP—METRO DC|VA|MD
AND SUNRISE DAY CAMP—GREATER PHILADELPHIA

Evelyn was the first camper registered for the first season of Horizon Day Camp—Metro DC|VA|MD. “Our family’s experience with Horizon Day Camp far exceeded our expectations,” said Evelyn’s mom, Katharine. “Evelyn loved camp from the very first to the very last day. At the end of the summer, we told Evelyn other campers also had a connection to cancer. She had no idea, which is a huge testament to Horizon’s success in normalizing summer camp for kids.”

Evelyn, who is being treated for B-cell acute lymphoblastic leukemia (ALL) at Children’s National Medical Center sums up her experience in simpler terms. “Camp was awesome,” she said. “I liked that each week was a different theme because they were all so silly. I met so many new friends and I liked how we sang every morning.”

Evelyn’s favorite camp memories include Kona ices, swimming, moon bounce and carnival day. “I really hope we do the same things next summer,” said Evelyn.





On July 11, opening day of Sunrise Day Camp–Greater Philadelphia, the weather was perfect – sunny without a cloud in the sky. The sunshine matched how Jenni Rebeti, the camp’s Director of Development and Programs, felt inside. Jenni had been waiting for three years for the camp to open, cultivating relationships in the meantime in local hospitals with staff and families. She was thrilled this project was finally coming to fruition.

“Watching my 5- and 6-year-old friends walk into camp smiling and laughing made me fall in love with the Sunrise mission in ways I never knew possible,” Jenni said. “Seeing the tears in the hospital turn into smiles at camp magnifies how special and healing camp really is.”

By the end of the first day of camp, Jenni’s young “best friend” from the hospital reported that she was not her best friend anymore. Jenni had moved down to fifth on the list, because her new camp friends had moved ahead! “I was so happy to have lost best-friend status to her typical peers,” said Jenni. “Camp not only changes the lives of our camp families, but it continues to change my life in the best of ways.”

SunriseVX: SO NO FAMILY HAS TO GO WITHOUT SUNRISE



Alessandra continued to go to Sunrise Day Camp—Long Island after her brother passed from cancer. When she and her family moved away from the camp's location, she was devastated - but her tears turned to smiles upon learning that there was a new way for her to continue camp with her Sunrise family.

Alessandra learned about our new virtual program, SunriseVX – and embraced it, participating online from her new home in every activity – from movement, art and theater to story writing and virtual field trips.

“Sunrise had been the one place where Alessandra could go to be herself, feel understood and feel really safe,” said Athena Levesque, Director of SunriseVX, Virtual Programming. “Alessandra made friends with the

SunriseVX campers and counselors in her unit and even was the loudest voice at game night. Her mother told us that they were so thankful to continue to be a part of the Sunrise family.”

Sunrise Virtual eXperience, better known as SunriseVX or VX, opened this past summer as the 11th Sunrise Day Camp. Getting its start in the Summer of 2020, when in-person day camp was not possible for anyone, virtual camp remained an option for campers in 2021. It quickly became clear that a full-summer virtual camp option is always needed to reach as many pediatric cancer patients as possible, pandemic or not.

“There are children across the U.S. who are not well enough to attend in-person camp, and many children do not live near a Sunrise Day Camp,” explained Athena. “We also saw a wide range of other reasons children could not make it to in-person camps, such as hospital appointments, family schedules and other circumstances.”

SunriseVX welcomed 70 children from 16 states last summer and is looking forward to hundreds more in the seasons to come. Said Athena: ***“We should always have a virtual option for families, so no family has to go without Sunrise.”***

To learn more, scan below or visit us at sunrisedaycamp.org/vx



TRAVEL THE WORLD WITH SUNRISE



Fasten your seatbelts and get ready for take off with ***Wheels Up!*** This 30-minute travel series features thrilling adventures, creative crafts and exciting trivia! Produced in partnership with **American Airlines**, ***Wheels Up!*** brings children from their home or hospital bed to a new, exciting destination every episode!

OUR 2022 ***WHEELS UP!***

5
SEASONS

53
EPISODES

87
HOSPITALS BROADCASTING

46,618
TOTAL VIEWS VIA THE WEB,
SUNRISE STUDIOS APP AND
IN-HOSPITAL CCTV

Watch ***Wheels Up!***
here! →



ENDURANCE CHALLENGES FOR SUNRISE



Climbing 29,029 vertical feet – the equivalent of climbing Mount Everest – in a 36-hour period is a huge challenge. Board member Evan Cagner is always up for one but felt that this challenge – called Everesting – “should be for a bigger purpose.” That’s why in August, Evan completed the challenge with the larger goal of raising the amount of feet he climbed in dollars to send children with cancer and their siblings to Sunrise Day Camps.

Evan’s Everesting is an example of an endurance challenge that can be done to help Sunrise grow. Running the Chicago Marathon on behalf of Sunrise is, too. But endurance challenges certainly don’t have to be as steep and long – **endurance challenges can be any activity that a supporter chooses.**

Gary Raisig helped start Sunrise’s endurance campaign when he turned to his Peloton to stay in shape, tracking his exercise to fundraise for Sunrise. Gary encouraged his Capital One colleagues to do the same and by March 2021, more than \$50,000 was raised by walking, running, biking or swimming in Capital One’s Banking Your Miles Challenge, which is now one of several programs part of the new campaign.

Participants of all ages can take part. SUSA Soccer Academy held its second-annual walk for Sunrise on May 6, raising over \$37,000 to send six children to camp. This year, the group raised \$60,000!

Also for non-runners – how about yoga, meditation, dance, strength and movement? The second-annual Rise Up for Sunrise event took place on September 18. Powered by Randi Eisenshtat and Cher Meli, this fitness and wellness event raised more than \$13,800 for Sunrise.

What kind of endurance challenge would you like to do on Sunrise’s behalf? To learn more or share another way you can give your all for Sunrise, contact MaryKate Smith at marykate.smith@sunriseassociation.org.

PAVING THE WAY FOR SUNRISEWALKS

Sneakers – belonging to people of all ages – were on the ground for the in-person 2022 SunriseWALKS. It was fantastic to walk side-by-side again at all of our annual SunriseWALKS campaign events.

We took great strides by opening new walkathon campaigns this past year – one in Metro DC and another in Chicago. Through a total of seven walkathons across the country, we raised over \$1.9 million by the end of October.

Young leaders proved that people of all ages are a big part of our success. Three years ago, at age 7, Raegan joined the SunriseWALKS Pearl River team, “Solmates,” and has since raised over \$8,500. Raegan creates TikToks and posters to spread the word about Sunrise. “Sometimes it doesn’t feel like I’m able to make that much of a difference because I’m a kid,” said Raegan, “but if you keep working towards helping others, it can

make a big difference for the kids and their families who are fighting cancer.”

The leading young fundraiser for SunriseWALKS is Gillian, 17, who started Team Port for the Long Island event four years ago. Since then, Gillian has raised more than \$40,000. “Fundraising for Sunrise has become a part of my life that I love, and it’s an experience that brings my family and friends closer together,” explained Gillian, who also works as a counselor at Sunrise Day Camp–Long Island.

We appreciate the work of our fundraisers of all ages and look forward to seeing supporters at our upcoming events. Please visit www.sunrise-walks.org or contact Suzanne Beck at suzanne.beck@sunriseassociation.org to learn more on how you, your family or corporation can get involved and/or to find an event near you. We Walk So They Can Soar!



WITH A LITTLE HELP FROM OUR FRIENDS



Aflac and Sunrise Association have a common bond—we both are committed to helping bring joy to children with cancer. One of the ways Aflac does this is through *My Special Aflac Duck*—an award-winning social robot developed by Aflac to help provide comfort, joy and distraction to children with cancer.

Aflac and Sunrise Association partnered this past camp season to distribute over

800 *My Special Aflac Ducks* to Sunrise, Horizon and Aurora camp families. To the delight of many campers, the Aflac team delivered over 150 *My Special Aflac Ducks* to camp families in person at Sunrise Day Camp—Long Island. In addition to making *My Special Aflac Ducks* available to children participating at our Sunrise Association camps in the U.S., Aflac helped send 10 children to camp through a \$60,000 contribution.



American Airlines and Sunrise Association connected in 2021 and our relationship continues to soar. When our relationship began, we had already produced two seasons of *Wheels Up!*, our engaging video series that transports children in hospital beds to exciting destinations around the world. American Airlines fell in love with *Wheels Up!* and became fast supporters of the program. Since season three, each episode features an American Airlines pilot, flight attendant or other staff member who introduces viewers to the episode's first destination. We love traveling together!

In 2022, American Airlines propelled their support of Sunrise Association to the next level with a gift of three million American Airlines Advantage Miles and became the first National Sponsor of SunriseWALKS. These miles have been distributed to our top SunriseWALKS supporters and have helped fuel our national-expansion efforts.

Dallas-Fort Worth is one of the target cities of our expansion. Building on the momentum of *Wheels Up!* being shown in four leading hospitals in the community, we set out to bring some Sunrise smiles to children battling cancer.

With the help of our friends Brill and Jason Garrett (former Dallas Cowboys head coach), we partnered with Five Below, JCC of Dallas, Aflac, local Dallas-Fort Worth TV station CW33 and more to run an arts, crafts and toy drive for local-area hospitals during Childhood Cancer Awareness Month. The Dallas-Fort Worth community came together to donate over 2,000 items. Brill and Jason Garrett delivered toys and some much-needed moments of joy in person to children battling cancer at Medical City Children's Hospital.







2021-2022 FINANCIAL OVERVIEW

Sources of Revenue

| | |
|--------------------------------|--------------|
| Special Events | \$ 3,880,746 |
| Contributions and Grants | \$ 4,564,746 |
| SunriseWALKS | \$ 1,688,454 |
| Misc. Income | \$ 108,179 |

Total Raised in support of the Sunrise Association \$ 10,242,125

Fundraising Costs in 2021-2022 equaled just 7.1% of funds raised.

Uses of Funds

| | |
|--|--------------|
| Day Camps, Sunrise on Wheels and Year-Round Programs | \$ 7,148,276 |
| Management and General..... | \$ 1,061,678 |
| Development..... | \$ 736,041 |

Total Expenses \$ 8,945,995

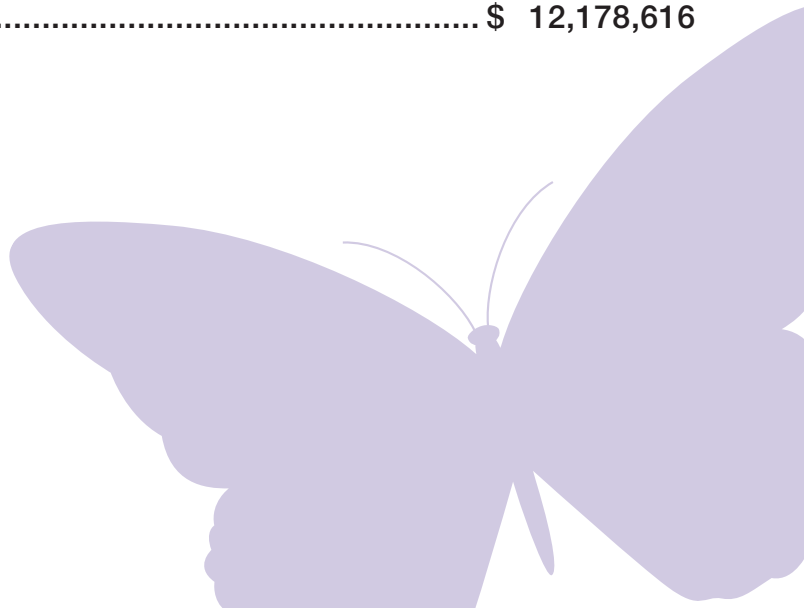
Assets

Total Assets \$ 16,506,297

Net Assets

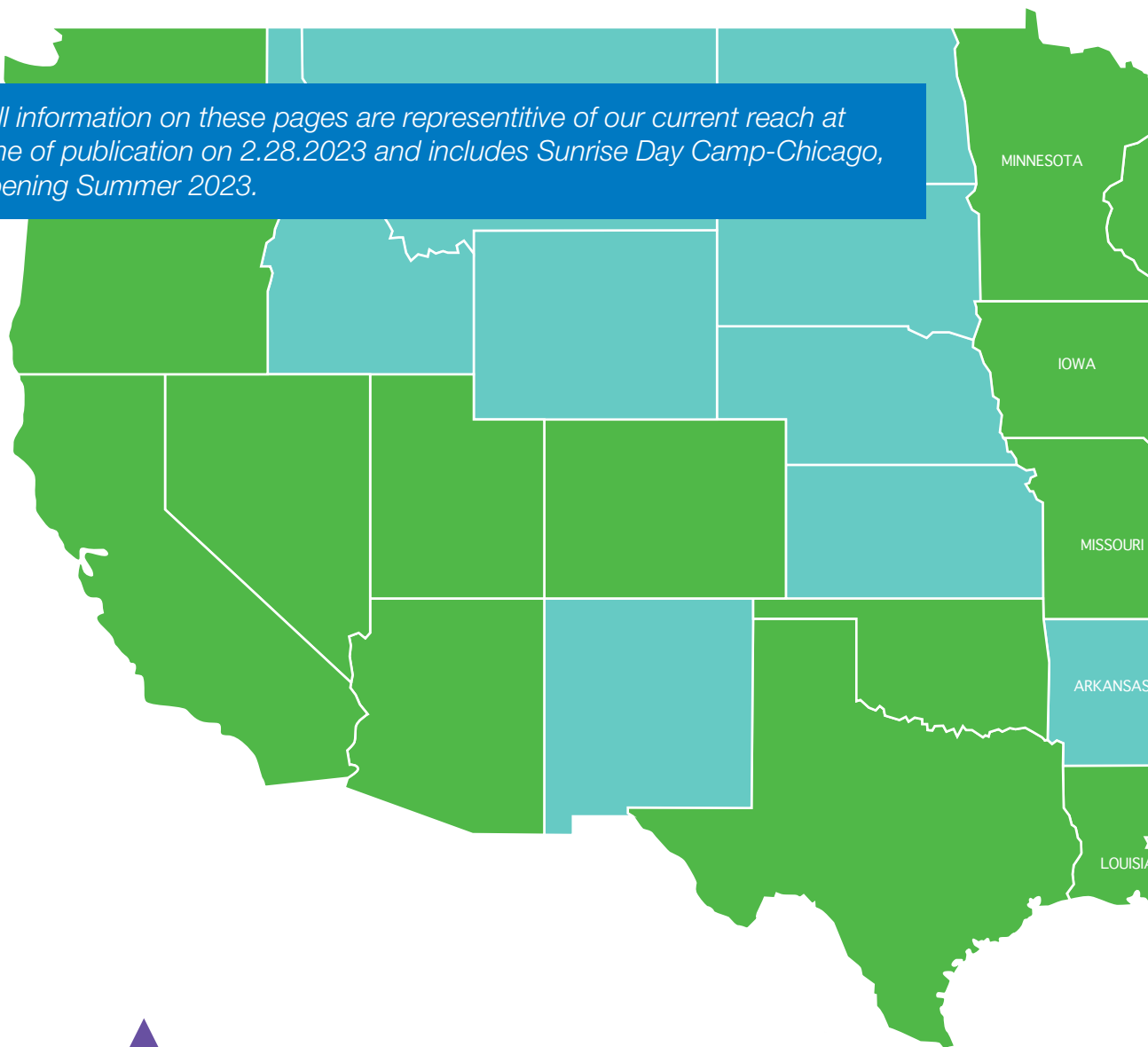
| | |
|------------------------------|--------------|
| Unrestricted..... | \$ 8,290,050 |
| Temporarily Restricted | \$ 3,888,566 |

Total Net Assets \$ 12,178,616



WHERE WE ARE NOW

**All information on these pages are representative of our current reach at time of publication on 2.28.2023 and includes Sunrise Day Camp-Chicago, opening Summer 2023.*



SUNRISE PROGRAMS BY THE NUMBERS

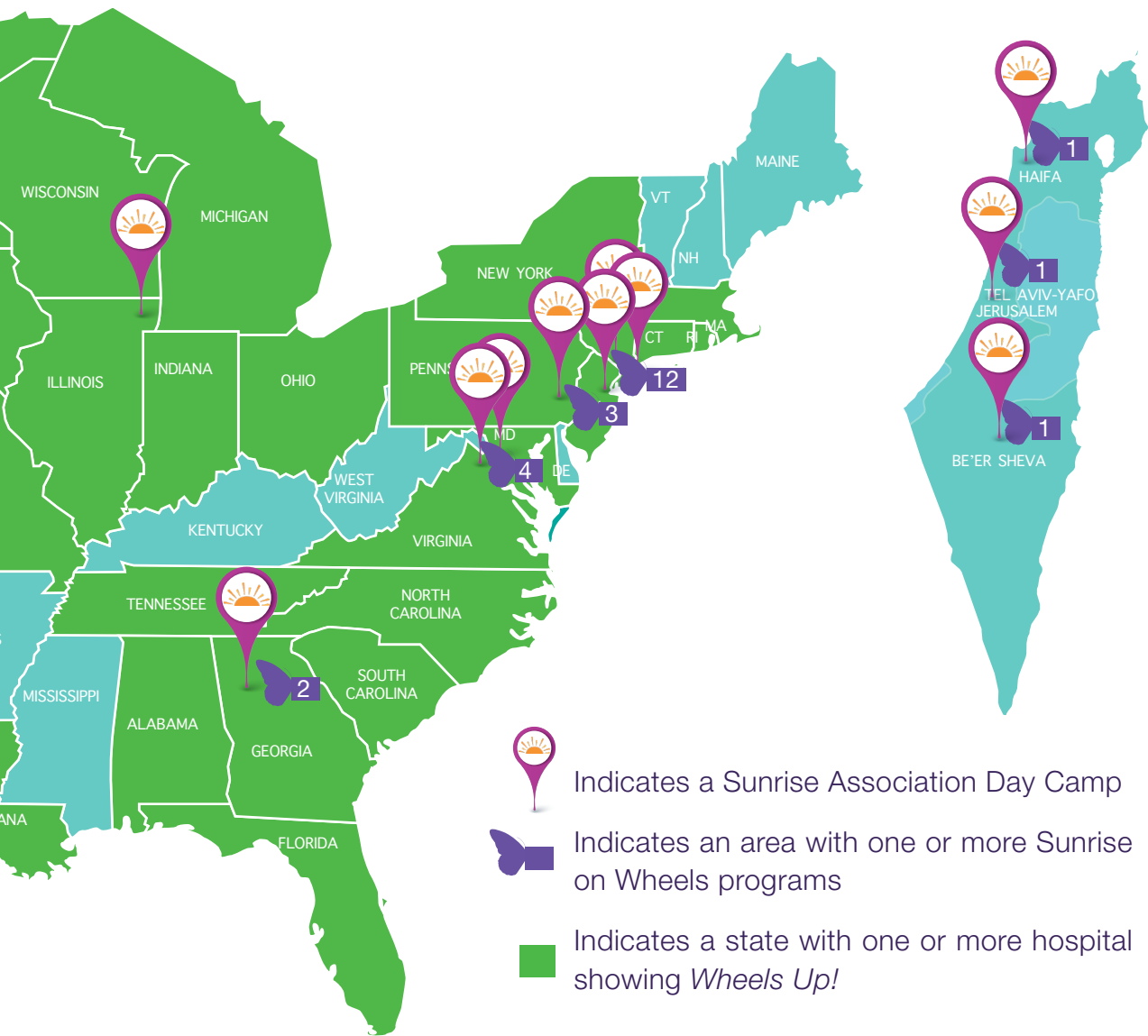
12

Full-Summer
Day Camps

43

Sunrise
on Wheels
Programs





36

Affiliated
Hospitals

110

Hospitals &
Facilities Showing
Wheels Up!



WHO WE ARE



BOARD OF DIRECTORS

Joy Zelin, Board Chair

Community Leader, Computer Graphic Artist

Nina J. Pickett, MPS, Immediate Past Chair

*Senior Director, Pediatrics,
Memorial Sloan Kettering Cancer Center*

Kenneth D. Faltischek, Vice Chair

Operating Partner, Zenyth Partners

Steven L. Marcus, CPA, Vice Chair

Managing Partner, CEO, Gettry Marcus CPA, P.C.

George Ross, Vice Chair

Former Executive Vice President and Senior Counsel, The Trump Organization

Lawrence J. Levine, Treasurer

The Par Group

Adam Russ, Esq, Secretary

Partner, Wasser & Russ, LLP

Froma Benerofe, LCSW, Assistant Secretary

Clinical Social Worker

Trustees:

Jimmy Berg

*President, Sunrise Toyota (Long Island) and
Sunrise Cheverolet (Forest Hills, Queens)*

Evan Cagner

Partner, Raisol Capital

Jeffrey J. Feil

Chairman, The Feil Organization

Michael Fliderbaum, M.Sc.

*International Investor, Entrepreneur
Founding Chairman, Recover Health Ltd.*

Laurie Girsky, MBA, CFP

Founding Principal, G-Squared Advisory, LLC

Gary C. Hisiger

Partner, Moritt Hock & Hamroff LLP

David S. Miller

Creative Director, PBG Miller Immersive Environments

Stuart Rabinowitz

*President Emeritus, Hofstra University
Senior Counsel, Meltzer, Lippe, Goldstein & Breitstone, LLP*

Theodore C. Richman, Esq.

Managing Partner, Solomon Richman P.C.

Richard Ross

President, Mature Temps

Andrew Sandler

Managing Director/Portfolio Manager, Head of Hedge Funds, Sandler Capital

ADMINISTRATIVE LEADERSHIP

Arnie Preminger, MSW

Founder, President & CEO

Beth Fetner

Chief Development Officer

Bonnie Flatow, MT

*Senior Vice President for Hospital
& Community Services*

Michele Vernon, MSW

*Senior Vice President for Camping
& Related Services*

Joel Block

Chief Operating Officer

Chris Strom

Chief Marketing Officer

Jeff Gass

Chief Financial Officer

Dr. Mark Atlas

Sunrise Association Medical Director

Gregory Hill

*Executive Director,
Aurora Day Camp–Atlanta, GA*

Mark McElrath

*Executive Director,
Horizon Day Camp–Baltimore, MD
Horizon Day Camp–Metro DC|VA|MD*

Rachel Black

*Executive Director,
Sunrise Day Camp–Greater Philadelphia*

Mirit Frenkel

*Executive Director,
Sunrise Israel*

Addie Goodman

*President & CEO, JCC Chicago/
Sunrise Day Camp–Chicago*

Orit Lender

*CEO, JCC of Staten Island/
Sunrise Day Camp–Staten Island*

Jeff Dannick

*Executive Director, Pozez JCC/
Horizon Day Camp–Metro DC|VA|MD*



WITH DEEPEST THANKS

We gratefully acknowledge our friends who have made the dream of Sunrise into a reality...

\$2,000,000 & UP

Feil Family Foundation
Billie & George Ross
The Marcus Foundation, Inc.

\$500,000 - \$1,999,999

Shari & Jeffrey Aronson
Harriet & Jimmy Berg
Lainie & Michael Contillo
Frances Davis Fund
Laurie & Stephen Girsky
The Kaminsky Family -
High Five Foundation
Janet & John Kornreich
Randi & Clifford Lane
Laura Rosenberg
Foundation
Rachel & Michael
Rosenberg
Regional Economic
Development Council
Randi & Dennis Riese
Aurily & Andrew Sandler
Sandra & Lawrence
Simon*
Roslyn & Len Stoler
Sunrise Toyota
The Kahlert Foundation, Inc.
UJA Federation of NY
Virginia B. Toulmin
Foundation
Wilf Family Foundations
Joy & Steve Zelin

\$200,000 - \$499,999

American Amusement
Machine Charitable
Foundation
Americana Manhasset
Froma & Andy Benerofe
BTIG
Care Camps
Doshi Family Foundation
Leena & Nitrin Doshi
Franciska & Nishat Doshi
Faber Future Foundation
Denise & Kenneth
Faltischek
Debi & Jeffrey Feinstein
Susan & Leonard
Feinstein
Nina & Hal Fetner
Fried, Frank, Harris,
Shriver & Jacobson LLP
Michael Greenseid

Gould-Shenfeld Families
Ellen & Gary Hisiger
Jericho High School
Andrea & Jeffrey
Lomasky
Jamie Nichols & Fran
Biondi
Nikon Inc.
Rachel & Gary Podell
Jill Podell
The Rabinowitz
Charitable Foundation
Michelle & Justin
Rabinowitz
Stacey & Michael
Rabinowitz
RBC Capital Markets
Wendy & Neil Sandler
Donna & Stewart Senter
Six String Giving
Skechers
Steven M. Perez
Foundation
The Altman Family
Foundation, Inc.
The Cordish Family
Foundation
The Marvin Tiger
Foundation
The Par Group
The Phyllis Backer
Foundation
The Richard Capri
Foundation
Allison & Jeffrey Wolf
Ellen & Edward Wolf

\$100,000 - \$199,999

Nanci & Sammy Aaron
Association Of
Contracting Plumbers
AvalonBay Communities
Brahman Capital Corp.
Bethpage Federal Credit
Union
Muriel & Bert Brodsky
Bruce Supply
Corporation
Michele & Evan Cagner
Vicki & Todd Cooper
Ellen & Daniel Crown
Nicki & Raymond
Davoodi
Dellon Sales Company
Lisa & Stephen
Eisenstein
Engel Burman
Renee & Jan Burman
Ellen & Steven Krieger
Judith & Michael
Faltischek
Allison & Larry
Fehrenbaker
Amy Feinstein
Carol & Richard Feinstein
Ferguson Enterprises
Arlene & Rick Fromewick
G.A. Fleet Associates
Gettry Marcus CPA, PC
Green Art Plumbing
Supply
Pearl & Nathan Halegua
Hirschleifers Inc.
Dana & Yossie Hollander
Karma For Cara
Foundation
Kenneth S. Battye
Charitable Trust UAD
Kidsshoes.com
Kirkland & Ellis LLP
Kramer Foundation
Gale & Larry Levine
Leslie & Peter Levine
Tammy & Jay Levine
Long Island Real Estate
Group
Sheree & Peter Levy
Louis and Rose Klosk
Fund
Sara & Barry Mandinach
Melville Jewish Center
Jill & Eric Miller
Mitzi & Warren Eisenberg
Family Foundation
Moritt Hock & Hamroff LLP
Old Oaks Foundation, Inc.
Orokawa Foundation
Donna & David Pelton
Philip A. Zaffere
Foundation, Inc.
PJT Partners
Danielle & Michael Ramin
Debby & Scott Rechler
Richard & Mary Morrison
Foundation
Marie Rizk
Ruskin Moscou &
Faltischek, P.C.

Lisa & David Sakhai
Rachel & Paul Selvin
Share4Kids Inc
Sharestates
Debbie & Steve Shapiro
Susie & Michael Siegel
Skolnick Family
Charitable Trust
Karen & Robert Sobel
Sylvan/Laureate
Foundation, Inc.
The Bristol Assisted
Living Communities
The Children's Cancer
Foundation
The Charlesmead
Foundation
The Jewish Federation of
Greater Washington
The Slomo and Cindy
Silvian Foundation, Inc.
Toyota Dealer Match
Program
Toyota Financial Service
Toyota Motor North
America
Penny & John Wallerstein
Michelle & Steven Warren
Webster Bank
Ilene & Michael Weinberg
Tammi & Jason Wild

\$50,000-\$99,999

Aflac
All Round Foods Bakery
Products, Inc
Alliant Insurance
Services, Inc.
AlphaSights
Hope & Marc Altheim
Amherst Securities Group LP
Apple Industries Inc.
Deborah & Isaac Ash
Marla & Kenny Askenase
Pamela & Phillip Barnett
Michelle & Howard
Berger
Betson Enterprises
Jane Borg & Barry
Blattman
BNP Paribas
Donna Brennan
Michael Brennan
Cantor Fitzgerald Relief Fund

Cardoza Plumbing Corp.
 CBRE
 Charlotte Pipe & Foundry Co.
 Jane & David Cohen
 Susan & Bruce Cohen
 Fara & Richard Copell
 Susan & Andrew Cott
 Nicki & Raymond
 Davoodi
 Ditmas Realty
 Lisa Donahue & John
 Patton
 Edelman, Krasin & Jaye PLLC
 Eisner Amper
 Embassy of the United
 Arab Emirates
 Exelon Corporation
 Nicole & Adam Faber
 Louise Faubert
 Beth Stark & Howard
 Fiddle
 Robyn & Andrew Frank
 Leah & Edward Frankel
 Holly & Daniel Friedman
 Jackie & Erik Gershwind
 Cindy & Ben Golub
 Natalia & Adam Good
 Elizabeth & Paul
 Greenbaum
 H.J. Kalikow & Co.
 Shelly & Ted Haft
 Hain Celestial Group, Inc.
 Harvey & Phyllis Sandler
 Foundation
 Henry Quentzel Plumbing
 Supply Co., Inc.
 Herman & Walter
 Samuelson Foundation
 Iranian American Jewish
 Federation of NY
 Amy & Scott Jaffee
 Cindy & Jay Joel and
 Family
 John Albuerne Family
 Foundation
 Johns Hopkins Medicine
 Joyce and Irving
 Goldman Family
 Foundation
 Kabbalah Centre
 International, Inc.
 Marji & Rich Kaplowitz
 Gila & Rafael Klein
 Jennifer & Larry Krasin
 Legacy Heritage Fund
 Limited
 London Fischer LLP
 Lori & David Moore
 Family Foundation
 Macadoo Family
 Foundation
 Maxim Group LLC

Rheda Becker & Robert
 Meyerhoff
 Nancy & Steven Mitchell
 Miles for Matt Foundation
 Michelle & Harold
 Morgenstern
 MSK Kids
 National Mah Jongg
 League Foundation
 Northwestern Mutual
 Foundation
 OppenheimerFunds
 PCSB Bank
 Melody & Michael Perrin
 Pine Hollow Country Club
 Plumbing Contractors
 Association of Long
 Island
 Barbara & Ed Portnof
 Nancy & Jon Pundyk
 Michelle & Michael
 Roberts
 Rosalie & Ken Roth
 Ruth Carol Fund
 Melissa Silver & Ricky
 Sandler
 Barri & Joseph Savasta
 Jody & Jason Schwartz
 Lucy Shostak
 Stacey & Sean Simon
 Cynthia & Jay Simoncic
 Solco Plumbing Supply, Inc.
 Stephanie & Lee Spiegel
 Stackman/Casriel Group
 - UBS
 Diana Stern
 Tracey & Adam Stern
 Alyson & Michael
 Strianese
 Sunshine Daydream
 Giving Foundation
 Talon Air
 Karen & Jeff Tanenbaum
 Paul J. Taubman
 The Akerson Foundation
 The Billi Marcus
 Foundation
 The Claire Friedlander
 Family Foundation
 The Cooper Family
 Foundation
 The David & Barbara
 Hirschhorn Foundation
 The Herbert Bearman
 Foundation
 The Kay Family
 Foundation
 The Rudin Foundation, Inc.
 Robert B. Toppel
 Torch Foundation
 United Legwear and
 Underwear Co.

Weil, Gotshal & Manges LLP
 Allen Weisberg
 Myra & Marvin Wittlin
 Edwin & Shirley Woldar
 Family Foundation
 Cindy & Paul Woldar
 Aileen & Marc Zemel

\$25,000 - \$49,999
 2 Friends Clothing
 Advanced Energy Center
 Advantage Title
 Lisa & Marc Albert
 Alice & Jaclyn
 Houseknecht Foundation
 Anthem, Inc
 ASAP Sales Corp.
 Aspro Mechanical
 Contracting, Inc.
 Astoria Federal Savings
 Audubon Communities
 Lori & Barry Ballen
 Bank of America
 Charitable Foundation
 Bank of America
 Securities
 Barclays
 Stephanie & Paul Basta
 Bill Wolf Petroleum Corp.
 Blackman Plumbing
 Supply Co., Inc.
 BlackRock
 Dana & Michael Blum
 BNB Bank
 John Bonello
 Stefanie Bower
 Judy & Stuart Brenner *
 Barbara & Paul Brensilber
 Braunstein Turkish LLP
 Ellen & Michael Brown
 Brown Advisory, Ann &
 Michael Hankin
 The Bunting Family
 Eunice & Rob Burnett
 Loretta & John Cameron
 Capital One
 CAPTRUST Community
 Foundation, Inc.
 CBRE NY Consulting &
 Agency Groups
 Certilman Balin Adler &
 Hyman LLP
 Marina & Spencer
 Chimere
 Lois Kohn-Claar & Gary
 Claar
 Shelly & Lawrence Cohen
 Steven Cohen
 Karen & David Cole
 Cord Meyer Development LLC
 Daniel J. Hannon &
 Associates Inc.

Daniel L. Nir & Jill
 E. Braufman Family
 Foundation
 Daniell Family
 Foundation, Inc.
 Danzig Charitable Trust
 Henry D'Auria
 Bari & Troy David
 David T. Diamond
 Holding
 Dedicated Building
 Services
 Designs that Donate
 Dime Community Bank
 Judy & Anthony Dolce
 Dunkin' Joy in
 Community Foundation
 Eco Thermal Contracting, Inc
 Rebecca & Martin
 Eisenberg
 Estate of Doris M. Towell
 Faber Eubanks LLC
 Janet & Mitchell Feldman
 Elizabeth & Matt Feuer
 Nicole & David Finkel
 Michael Fliderbaum
 Nancy & Bruce Frank
 Frederic R. Coudert
 Foundation
 Frieze Family Foundation
 Cindy & Brian Gavin
 George A. Ohl, Jr. Trust
 Gilbane Building
 Company
 Arlene & Larry Gilbert
 Gil Meyerowitz, Inc.
 Donna & Jonathan
 Glabman
 Jaime & Rich Glazerman
 Glen Oaks Club
 Arlene & Morris Goldfarb
 Goldman Sachs
 Tara Slone-Goldstein &
 Wayne Goldstein
 Bonni Gould
 Graham Company
 Mindy & Jonathan Gray
 Harbor East Management
 Group LLC
 Jason Hanna
 Carol Harrison
 Haymakers for Hope
 The Henry Family
 Horizon Insulation
 Jim & Pat Houlihan
 Howard & Irene Levine
 Family Foundation
 Illuminado Partners LLC
 Infinity Drain
 Institutional Insurance
 Group

Irving I. Moskowitz
Foundation
Cathie & Joshua Isay
Jewish Federation of
Greater Pittsburgh
J. Ira and Nicki Harris
Family Foundation
John N. Blackman Sr.
Foundation
Jonis Realty
Jordan Cooper LLC
JRM Construction
Management
Stacy & Gary Kaplan
Bonnie & Daniel Katz
Susan & Robert Katz
Susan & Shepard Kay
Angela & Richard Kessel
Kimco Realty
KPMG
Andrea & Rob Kramer
Cathy Krieger
Amy & Evan Krinick
Laura & Robert Landau
Law Offices of Peter T.
Nicholl
Ellen & Martin Levine
Lisa Beth Gerstman
Foundation
Estee Levine & David
Little
Kim & David Levine
Susan & Eric Levy
Tracy & David Levy
Lexus Champions for
Charity
Liberty Mechanical
Contractors, Inc.
Jessica & Stuart Lippman
Judy & Larry Lippman
Ellen & Jonathan Litt
London Jewelers
Michael Lowenstein
Mary and Daniel
Loughran Foundation
Adrienne & Geoffrey Lurie
Linda & Steve Marcus
Randi Marcus
Wendy & John
McConaghy
McCormick & Company, Inc.
Laurie & Jack Messerly
Millennium Management LLC
Vicki & David Miller
Natalie & Richard Mines
Shelly & Neil Mitchell
Mixology Scarsdale, LLC
Beth & Kenneth
Motschwiller
MSC Industrial Direct
Co., Inc.
Cindy & Scott Musoff

NBC 4 New York
Neuberger Berman
NGL Insurance Group
Old Westbury Golf &
Country Club Foundation
Open Sky Foundation
Orange & Rockland
Dipak & Amit Patel
The Paterakis Family
Paul, Weiss, Rifkind,
Wharton & Garrison LLP
Lindsay & Brett Pelton
Joan & Joel Picket
Piper Sandler
Plumbers Local Union #1
Bunny Podell
Dee & Jonathan Pratt
Praxis Public Relations Inc.
Premier Legal Advantage Inc
Prime Food Processing Corp.
Pyramid Foundation, Inc.
Ravens Foundation
Danielle Contillo & Mike
Razewski
Russ Reardon
Reilly Financial Group
Tammy & Michael
Reisman
Julie & Charles Riviezzo
Rivkin Radler LLP
Nina & Allan Rodolitz
Rosedale Federal Savings
& Loan Association
Lisa & Neil Rosenfeld
Robert Ross
RRSC Inc.-Trail's End
Camp
Gail & Richard Rubel
Sandler Capital
Management
Ellen Pease & Charles
Scheeler
Sheri & Alan Seiler
SightMD
Signature Bank
Katie Hangle & Howard
Simon
Stephanie & David Simon
SJS Capital Partners
Skadden, Arps, Slate,
Meagher & Flom LLC
Karen & Marc Spector
The Starker Family
Foundation
State Of Maryland
Rachel & Alexander Stern
Steven and Beverly
Rubenstein Foundation
Tarter Krinsky & Drogin LLP
TD Securities Underwriting
Hope Fund, Inc.

The Carol & Arnold
Wolowitz Foundation
The Dhyani Foundation
The Hammill Family
Foundation
The Inlay Foundation
The Joe & Hellen Darion
Foundation
The Marion I. & Henry J.
Knott Foundation
The Natan and Sara
Blutinger Charitable
Foundation
The Schwarz Family
Foundation
The Seawane Country
Club
The Stewart & Marlene
Greenebaum Family
Foundation
Tiedemann Investment
Group
TOTO
UBS Financial Services
Umberto and Clorinda
Romano Foundation
Van Houten Farms, LLC.
Vert Charitable Trust
Susan & Barry Weisfeld
Nicole & Seth Yablans
Vivian & Jim Zelter

Horizon Day Camp- Metro DC|VA|MD

\$10,000-\$99,999
Melinda Bieber and
Norman Pozez
Care Camps
Susan & William Kristol
Rosalie & Monroe Lesser
Alan & Amy Meltzer
Honey Nashman
The Norman And Ruth
Rales Foundation
RFI Foundation

Sunrise Day Camp- Chicago

\$200,000 & UP
Heckman Family
Foundation

\$10,000-\$99,999
Karyn Lutz
Cindy & Howard Garoon
Five Below Foundation
Mike Frieze
Howard & Loren Friend
Cindarae & Donald Malin
Michael Adler

Sunrise Day Camp- Staten Island

\$200,000 & UP
Lucille and Jay Chazanoff

\$100,000-\$199,999
John Atkins, NYCT
Richmond County
Savings Foundation

\$10,000-\$99,999
Ron Avis and Family
Basepoint Foundation
Joan & Alan Bernikow
Zaremba Brown
Carmine & Robert
Desantis Charitable
Foundation
Solomon Chemo and
Family
Joni DelPriore
H2 Technology Partners
Harry Doherty Family
Foundation
Incredibly Blessed
JCC Early Childhood
Education
KOA Care Camps
Ron Leventhal
Brian Lincer
The Max Challenge
The Megna Family
Monsignor Farrell High
School
New York Community
Bank
The Olsen Family
Richmond County
Savings Bank
Richmond University
Medical Center
Cory Schifter and Family
Shoprite
South Shore Rotary Club
Stop & Shop
Brandon Sturman
Verrazano Kiwanis Club
Zaremba Brown

**All listings are reflective
of cumulative giving.*

*We would also like
to extend our thanks
to the thousands of
Sunrise Association
donors who have made
gifts of \$24,999 or less,
but for whom space
constraints currently
make it impossible to
list in this issue.*



11 Neil Court
Oceanside, NY 11572